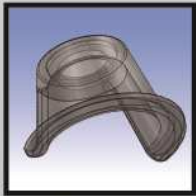


Application of PRO10 supporters



* 1

Shallow contact cap
To observe soft materials
like cloth 、 paper 、 hair 、
skin etc.



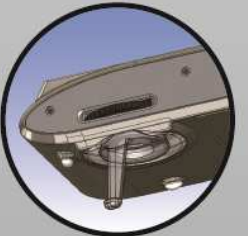
* 1
* 2

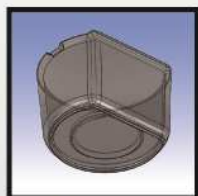
Deep contact cap
To observe 、 screw 、 coin
、 SMT components etc.



* 1
* 2

Non-contact supporter
To observe wound 、 flower
、 insect 、 narrow area etc.





*2

Deep tank

To observe insects 、 rocks
etc, bigger objects.



Shallow tank

To observe fish eggs 、
spore 、 sand 、 drop 、
diamond etc.



- * 1 There is a magnet on the supporter to help attaching onto the lens.
- * 2 When it uses the supporter , the figure of the ruler function becomes invalid.