

IP networking with PicoLog recorder

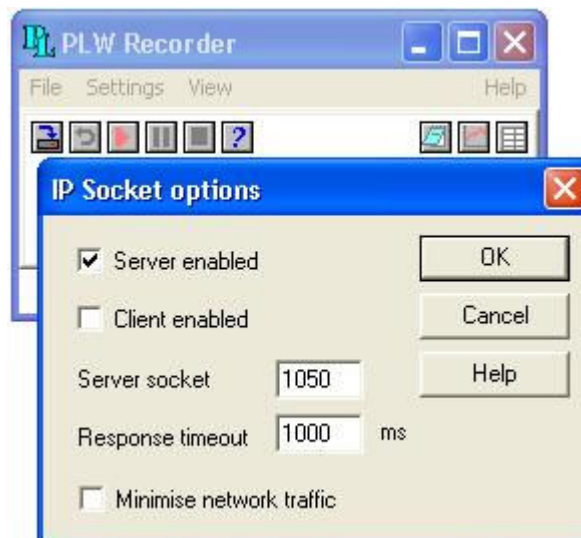
Server End:

On the server computer go to preferences and choose IP Sockets

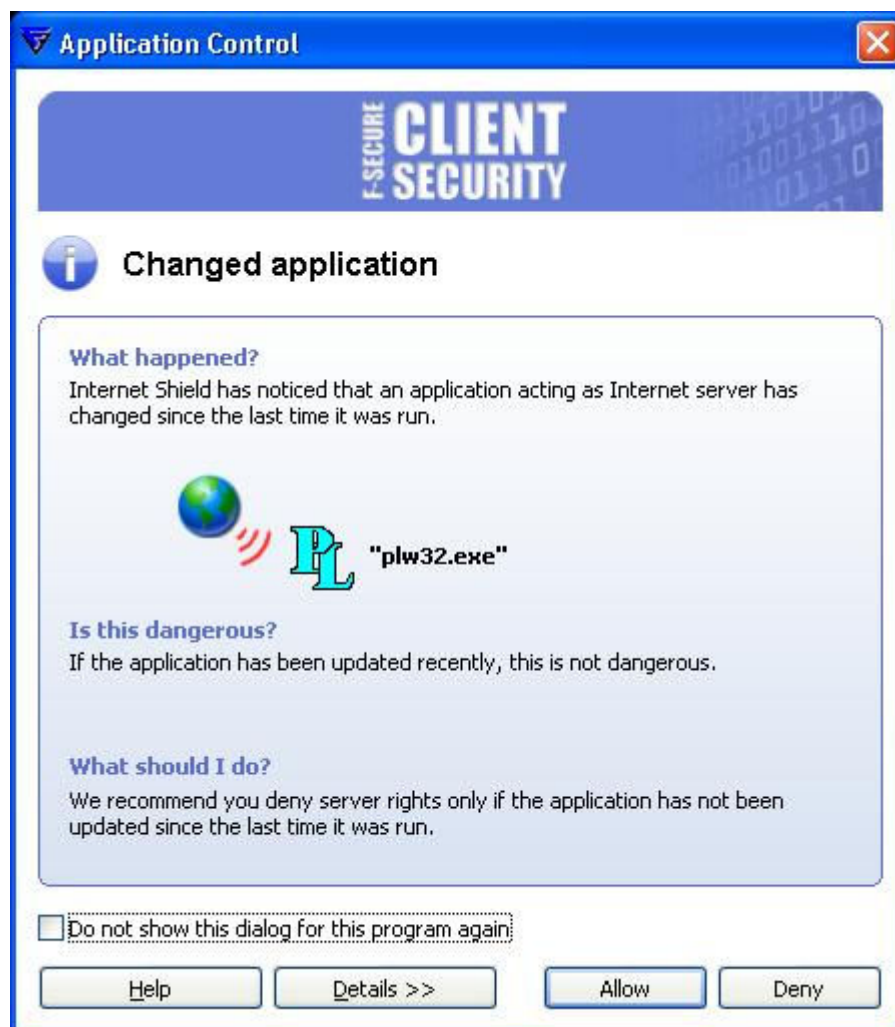


Next select “server enabled”, change the server socket if you wish or leave as default.

Click on “OK” and restart the software.



Ensure your firewall allows PicoLog recorder to run:



Now configure the system as you would normally do, adding the channels you will require. You do not need to do any recording or create data files or do any scaling, all this can be done on the client end.

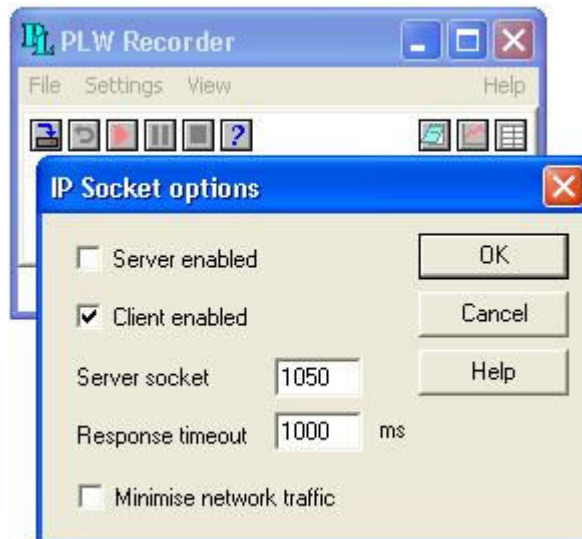
Note down the IP address of the server PC. This can be found by going into command prompt (hit the start button and press the 'r' key on your keyboard and type in cmd then click on OK) Once in command prompt type in *ipconfig* then press enter.

Client End:

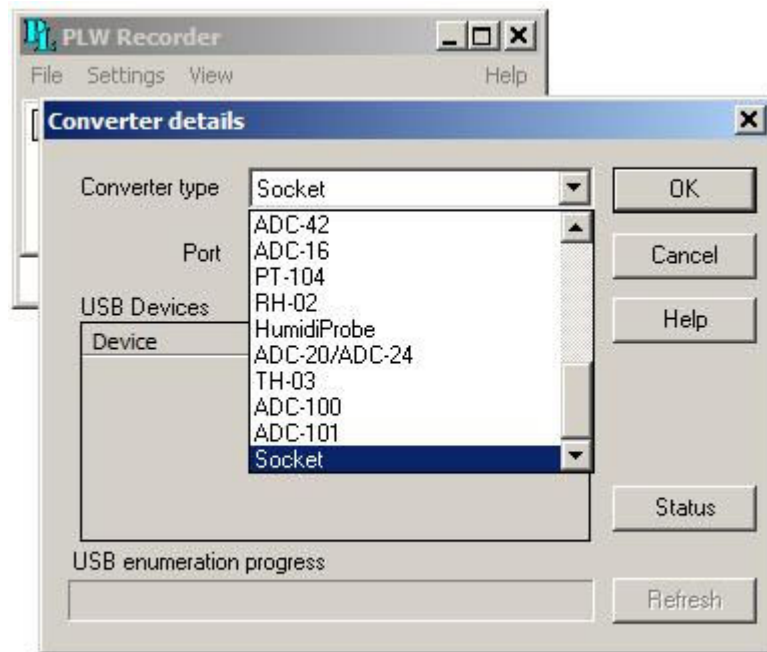
On the client PC go to preferences:



Then select Client Enabled , and match the Server Socket if changed from default settings. Click on “OK” and restart the software.



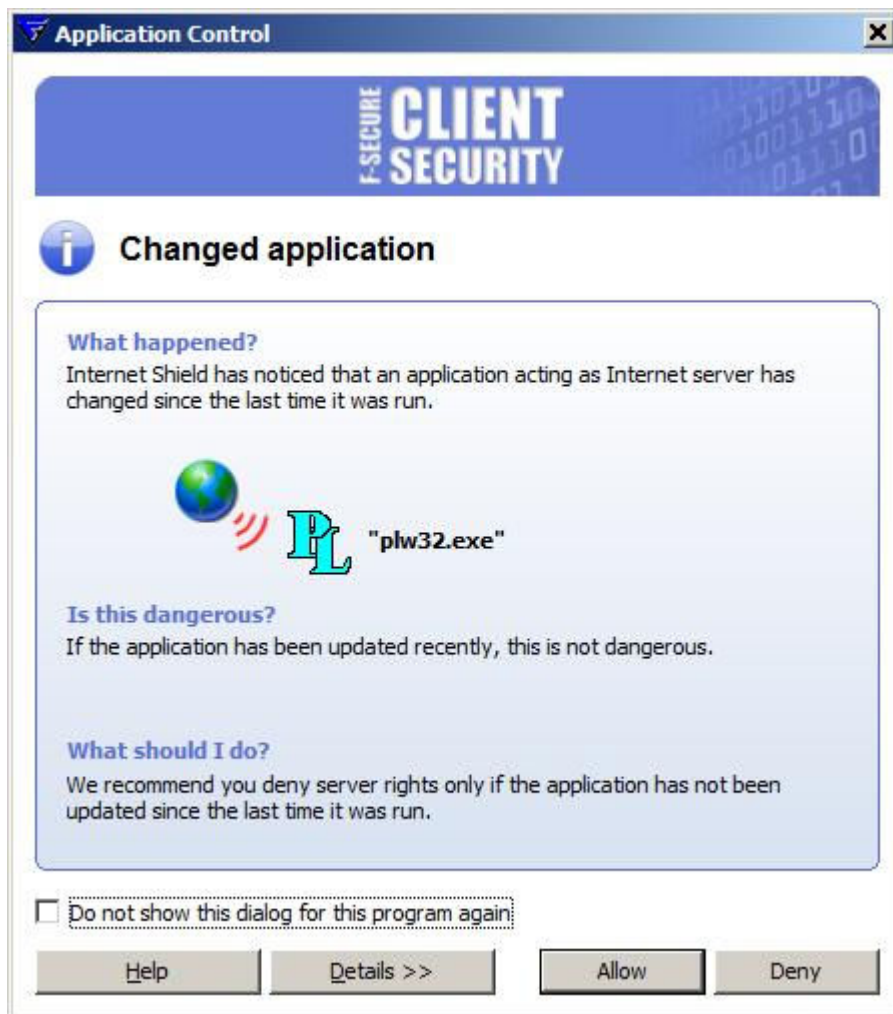
Go through your configuration settings and select “Socket” as your converter:



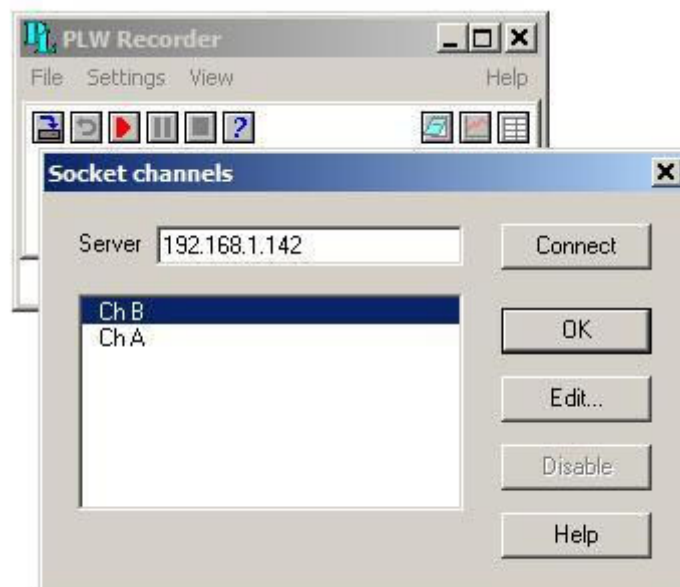
Type in the IP address of your server computer and select “Connect”



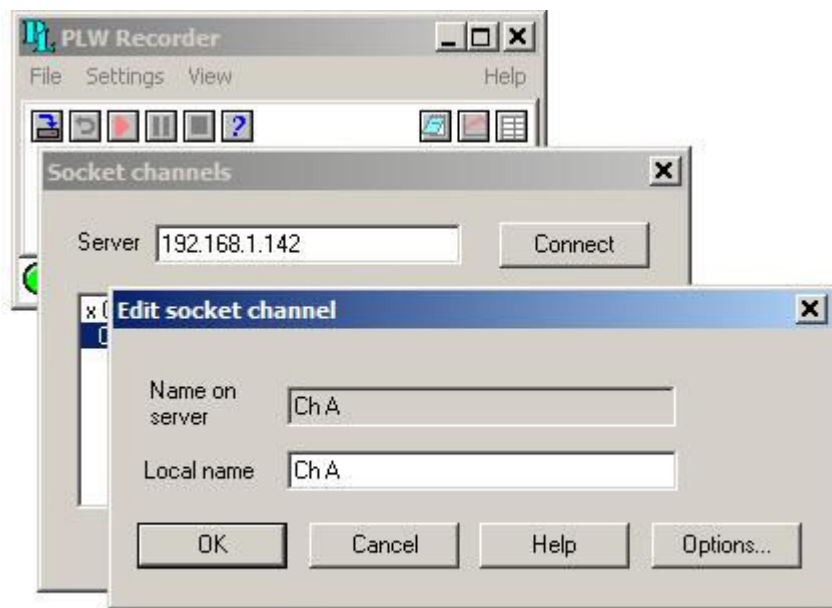
Again make sure your firewall allows PicoLog recorder to run:



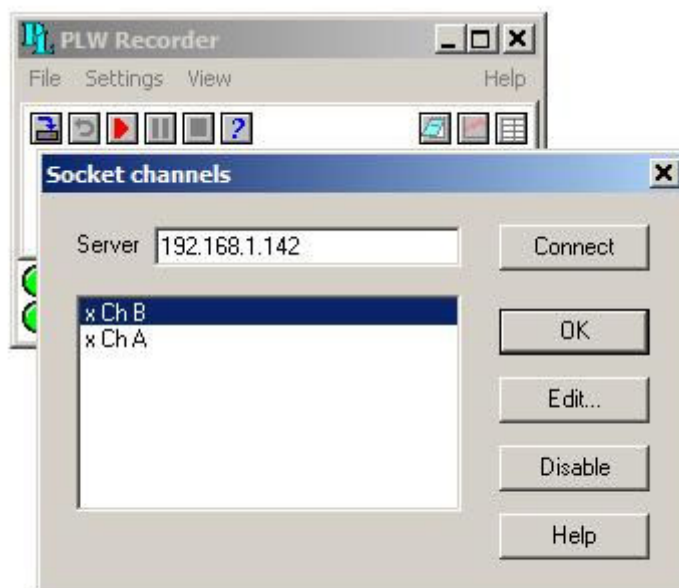
You can now view the channels that were added on the server PC



Click on Edit to enable the channels you wish to record



Once this is done you should see a cross next to the enabled channels



You can now create a data file or to start recording as usual.

NOTE: If you wish to control your logger via the internet you may need to use port forwarding.